

THE JOHN MOORE PRIMARY SCHOOL COVID-19 CATCH-UP PLAN OVERVIEW (2021-22) – EEF TIERED MODEL

COVID-19 Catch-up Funding Allocation: £4,350



SOAR



SHARE



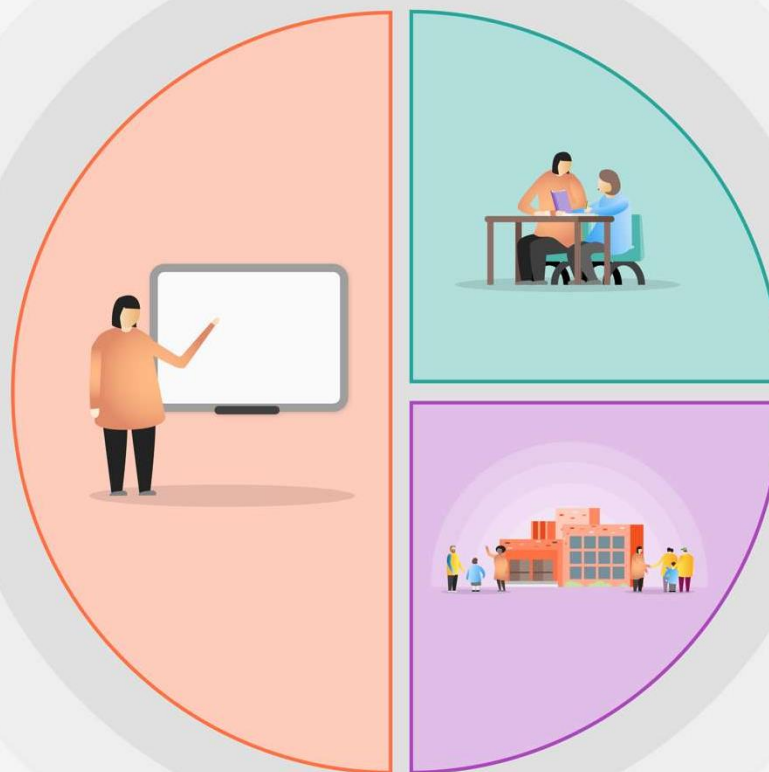
STRIVE



SPARKLE

1 Teaching

- Quality first teaching with a continued focus on speaking, reading, writing and mathematics.
- Deepening subject knowledge and staff understanding of the mathematics, writing and reading curriculum– CPD in progression of skills and how to address gaps in learning.
- Ensuring that pupils in need of support receive the necessary ‘scaffolding’ to access their learning and address gaps
- Making use of flexible grouping within year group bubbles with pupils being allocated to smaller groups where necessary
- Ensuring that assessment systems help staff understand what pupils have or have not learned (use of Insight tracking, cold and hot tasks and diamond dig assessments alongside formative assessment)
- Delivery of an effective remote teaching model in the event of a partial or full school closure



2 Targeted academic support

- One to one and small group tuition (Existing teachers and staff available through the National Tutoring Programme where this is in the best interests of the pupils)
- Targeted and structured interventions led by well-trained and experienced staff:
- Effective deployment of teaching partners to address gaps in learning on a 1-2-1 and small group basis

3 Wider strategies

- Metacognition – helping pupils to monitor and direct their thinking for a given task and giving them strategies to work independently
- Communicating and supporting parents – supporting learning / attendance / on-going family support through early help system and through pastoral support in school